

JE - LIYCY INDUSTRIAL ELECTRONIC CABLE VDE - 0815



Application : Suitable for measurement and control in the field of electronics. This cable is also used for data transmission in computers. Suitable for fixed installation in dry and humid premises.

Special application : Suitable for maxi-termi point connections.

Construction		Technical Data	
Conductor	: Stranded plain copper as per class 2 of VDE - 0295.	Temperature range	
Insulation	: PVC insulation type YI-3 to VDE 0207.	Stationary	: - 30°C to + 70°C.
Pair	: Cores twisted into pairs. Two (2) pairs shall be a quad. Pairs colour coded as per VDE- 0815. First pair : Blue + Red Second pair : Grey + Yellow Third pair : Green + Brown Fourth pair : White + Black	Flexing	: - 5°C to + 50°C.
Unit	: Four pairs bundled into a unit and wrapped with an open helix of numbered polyester tape.	Peak working voltage	: 225 Volts.
Assembly	: Units cabled with non-hygroscopic fillers if necessary, covered with a polyester binder tape and braided with plain copper wires. *	Minimum bending radius	: 5 X cable diameter.
Outer sheath	: PVC type YM-1 as per VDE - 0207 coloured grey (blue for Intrinsically safe circuits). Outer sheath passes flame retardant test as per IEC-332 - 1.	Conductor resistance at 20°C.	: 39.2 ohm/Km.
		Insulation resistance	: 100 MOhm-Km.
		Mutual Capacitance	: 100 nF/Km (cables up to 4 pairs the value can exceed by 20%).
		Capacitance unbalance maximum	: 200 pF/100m.
		R.M.S. test voltage	: 500V core/core. : 2000V core/screen.
		Attenuation	: 1.1 dB/Km at 800 Hz. : 3.0 dB/Km at 10 KHz.

Size sq. mm	Order No.	MESC Code	Pairs	Strands X diameter No. X mm	Insulation thickness mm	Sheath thickness mm	Approx. O. D. mm	Approx. Weight Kg / Km
0.5	15001	0511-02P00050-U1GY8-02	2	7 X 0.3	0.3	1.0	7.2	90
	15002	0511-04P00050-U1GY8-02	4	7 X 0.3	0.3	1.0	9.9	145
	15003	0511-08P00050-U1GY8-02	8	7 X 0.3	0.3	1.2	13.6	245
	15004	0511-12P00050-U1GY8-02	12	7 X 0.3	0.3	1.2	15.1	320
	15005	0511-16P00050-U1GY8-02	16	7 X 0.3	0.3	1.2	16.9	400
	15006	0511-20P00050-U1GY8-02	20	7 X 0.3	0.3	1.4	18.8	485
	15007	0511-24P00050-U1GY8-02	24	7 X 0.3	0.3	1.4	20.2	565
	15008	0511-32P00050-U1GY8-02	32	7 X 0.3	0.3	1.4	22.7	700
	15009	0511-36P00050-U1GY8-02	36	7 X 0.3	0.3	1.6	24.3	800
	15010	0511-40P00050-U1GY8-02	40	7 X 0.3	0.3	1.6	25.3	865
	15011	0511-48P00050-U1GY8-02	48	7 X 0.3	0.3	1.6	27.3	1005

* Braid with Tinned copper can be provided. In that case, last five characters of MESC code shall read U2GY8.
Packing: Wooden Drums of 500/ 1000 Metres.

JE-Y(St)Y INDUSTRIAL ELECTRONIC CABLE VDE - 0815



Application : Suitable for measurement and control in the fields of electronics. This cable is also used for data transmission in computers. Suitable for fixed installation in dry and humid premises.

Special Applications : Suitable for MAXI-TERMI point connections.

Construction		Technical Data	
Conductor	: Solid plain copper.	Temperature range	
Insulation	: PVC insulation type YI-3 to VDE 0207.	Stationary	: -30°C to +70°C.
Pair	: Cores twisted into pairs. Two (2) pairs shall be a quad. Pairs colour coded as per VDE- 0815. First Pair : Blue + Red. Second Pair : Grey + Yellow. Third Pair : Green + Brown. Fourth Pair : White + Black.	Flexing	: -5°C to +50°C.
Units	: Four pairs bundled into a unit and wrapped with an open helix of numbered polyester tape.	Peak working voltage	: 225 Volts.
Assembly	: Units cabled with non-hygroscopic fillers if necessary, shielded with aluminum polyester tape and stranded tinned copper drain wire for electrostatic noise rejection.	Minimum bending radius	: 7.5 X cable diameter.
Outer Sheath	: PVC type YM-1 as per VDE 0207 coloured grey (blue for Intrinsically safe circuits). Outer sheath passes flame retardant test as per IEC-332-1.	Conductor resistance at 20°C	: 36.6 ohm/Km.
		Insulation resistance	: 100 MOhm - Km.
		Mutual Capacitance	: 100 nF/Km (cables up to 4 pairs the value can exceed by 20%).
		Capacitance unbalance maximum	: 200pF/100m.
		R.M.S. test voltage	: 500 V core/core. 2000 V core/screen.
		Attenuation	: 1.1dB/Km at 800HZ. 3.0dB/Km at 10 KHz.

Size sq. mm	Order No.	MESC Code	Pairs	Strands X diameter No. X mm	Insulation thickness mm	Sheath thickness mm	Approx. O. D. mm	Approx. Weight Kg / Km
0.5	12001	0261-02P00050-U0GY8-02	2	1 X 0.8	0.3	1.0	5.9	60
	12002	0261-04P00050-U0GY8-02	4	1 X 0.8	0.3	1.0	8.4	95
	12003	0261-08P00050-U0GY8-02	8	1 X 0.8	0.3	1.0	11.4	160
	12004	0261-12P00050-U0GY8-02	12	1 X 0.8	0.3	1.2	13.3	230
	12005	0261-16P00050-U0GY8-02	16	1 X 0.8	0.3	1.2	15.0	295
	12006	0261-20P00050-U0GY8-02	20	1 X 0.8	0.3	1.2	16.4	355
	12007	0261-24P00050-U0GY8-02	24	1 X 0.8	0.3	1.6	18.6	455
	12008	0261-32P00050-U0GY8-02	32	1 X 0.8	0.3	1.6	20.9	560
	12009	0261-36P00050-U0GY8-02	36	1 X 0.8	0.3	1.6	22.0	640
	12010	0261-40P00050-U0GY8-02	40	1 X 0.8	0.3	1.6	23.0	675
	12011	0261-48P00050-U0GY8-02	48	1 X 0.8	0.3	1.6	24.9	845
	12012	0261-80P00050-U0GY8-02	80	1 X 0.8	0.3	1.8	31.5	1200

Packing: Wooden Drums of 500/1000 Metres.

JE - LiY(St)Y INDUSTRIAL ELECTRONIC CABLE ADAPTED TO VDE - 0815



Application : Suitable for measurement and control in the field of electronics. This cable is also used for data transmission in computers. Suitable for fixed installation in dry and humid premises.

Special Applications : Suitable for MAXI-TERMI point connections.

Construction		Technical Data	
Conductor	: Stranded plain copper.	Temperature range	
Insulation	: PVC insulation type YI- 3 to VDE 0207.	Stationary	: - 30°C to + 70°C.
Pair	: Cores twisted into pairs. Two(2)pairs shall be a quad. Pairs colour coded as per VDE-0815. First Pair : Blue + Red. Second Pair : Grey + Yellow. Third Pair : Green + Brown. Fourth Pair : White + Black.	Flexing	: - 5°C to + 50°C.
Unit	: Four pairs bundled into a unit and wrapped with an open helix of numbered polyester tape.	Peak working voltage	: 225 Volts.
Assembly	: Units cabled with non-hygroscopic fillers if necessary, shielded with aluminum polyester tape and stranded tinned copper drain wire for electrostatic noise rejection.	Minimum bending radius	: 7.5 X cable diameter.
Outer Sheath	: PVC type YM-1 as per VDE 0207 coloured grey (blue for Intrinsically safe circuits). Outer sheath passes flame retardant test as per IEC-332-1.	Conductor resistance at 20°C	: 39.2 Ohm/Km.
		Insulation resistance	: 100 MOhm - Km.
		Mutual Capacitance	: 100 nF/Km (cables upto 4 pairs the value can exceed by 20%).
		Capacitance unbalance maximum	: 200pF/100m.
		R.M.S. test voltage	: 500 V core/core. : 2000 V core/screen.
		Attenuation	: 1.1dB/Km at 800 Hz. : 3.0 dB/Km at 10 KHz.

Size sq. mm	Order No.	MESC Code	Pairs	Strands X diameter No. X mm	Insulation thickness mm	Sheath thickness mm	Approx. O. D. mm	Approx. Weight Kg / Km
0.5	12013	0211-02P00050-U0GY8-02	2	7 X 0.3	0.3	1.0	6.2	60
	12014	0211-04P00050-U0GY8-02	4	7 X 0.3	0.3	1.0	8.8	105
	12015	0211-08P00050-U0GY8-02	8	7 X 0.3	0.3	1.2	12.5	190
	12016	0211-12P00050-U0GY8-02	12	7 X 0.3	0.3	1.2	14.0	255
	12017	0211-16P00050-U0GY8-02	16	7 X 0.3	0.3	1.2	15.8	325
	12018	0211-20P00050-U0GY8-02	20	7 X 0.3	0.3	1.2	17.3	390
	12019	0211-24P00050-U0GY8-02	24	7 X 0.3	0.3	1.6	19.6	495
	12020	0211-32P00050-U0GY8-02	32	7 X 0.3	0.3	1.6	22.1	630
	12021	0211-36P00050-U0GY8-02	36	7 X 0.3	0.3	1.6	23.2	695
	12022	0211-40P00050-U0GY8-02	40	7 X 0.3	0.3	1.6	24.3	760
	12023	0211-48P00050-U0GY8-02	48	7 X 0.3	0.3	1.6	26.2	885

Packing: Wooden Drums of 500/ 1000 Metres.

RE-2YCYPIMF INSTRUMENTATION CABLE ADAPTED TO VDE - 0815



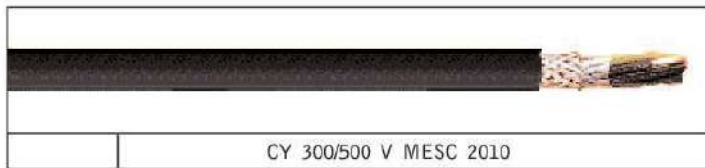
Application: Suitable for data processing and process control. The individual shielding of pairs results in high crosstalk attenuation. Over-all copper braid protects screened pairs from outer electrostatic noise. Low level of attenuation and low mutual capacitance enable long transmission distances. Suitable for fixed installation in dry and wet locations.

Construction		Technical Data	
Conductor	: Stranded plain copper as per class 2 of VDE-0295.	Temperature range	
Insulation	: Polyethylene.	Stationary	: - 30°C to + 70°C.
Pair shield	: Black and white cores twisted into pairs. Each pair shielded with aluminum polyester tape and a tinned copper drain wire, provided with a numbered tape for pair identification.	Flexing	: - 5°C to + 50°C.
Assembly	: Shielded pairs/units cabled with non-hygroscopic fillers if necessary, covered with a polyester binder tape and braided with plain copper wires. All individual shielded pairs are electrically isolated from each other.	Peak working voltage	: 300 Volts.
Outer Sheath	: PVC type YM-1 as per VDE 0207 coloured grey (blue for Intrinsically safe circuits). Outer sheath passes flame retardant test as per IEC-332-1. Sheath wall thickness as per VDE- 0815.	Minimum bending radius	: 7.5 X cable diameter.
		Conductor resistance at 20°C	: 39.2 ohm/Km.
		Insulation resistance	: 5 Gohm - Km.
		Mutual Capacitance	: 85 nF/Km.
		Inductance	: 0.75 mH/Km.
		R.M.S. test voltage	: 1000 V core/core. 1000 V core/screen.

Size sq. mm	Order No.	MESC Code	Pairs	Strands X diameter No. X mm	Insulation thickness mm	Sheath thickness mm	Approx. O. D. mm	Approx. Weight Kg / Km
0.5	18001	0812-02P00050-U1GY8-00	2	7 X 0.3	0.3	1.0	9.8	120
	18002	0812-04P00050-U1GY8-00	4	7 X 0.3	0.3	1.0	10.5	160
	18003	0812-08P00050-U1GY8-00	8	7 X 0.3	0.3	1.2	14.4	280
	18004	0812-12P00050-U1GY8-00	12	7 X 0.3	0.3	1.2	16.1	370
	18005	0812-16P00050-U1GY8-00	16	7 X 0.3	0.3	1.6	18.9	490
	18006	0812-20P00050-U1GY8-00	20	7 X 0.3	0.3	1.6	20.6	585
	18007	0812-24P00050-U1GY8-00	24	7 X 0.3	0.3	1.6	22.1	675
	18008	0812-32P00050-U1GY8-00	32	7 X 0.3	0.3	1.6	24.8	850
	18009	0812-36P00050-U1GY8-00	36	7 X 0.3	0.3	1.6	26.1	935
	18010	0812-40P00050-U1GY8-00	40	7 X 0.3	0.3	1.6	27.2	1020
	18011	0812-48P00050-U1GY8-00	48	7 X 0.3	0.3	1.8	29.8	1215

Packing : Wooden Drums of 500/1000 Metres.

CY DATA TRANSMISSION CABLE ADAPTED TO VDE 0250



Application : These cables are used as signal cables in the field of electronics, computer systems and various control systems such as tool making and machine industries. Copper wire screen provides interference-free signal transmission. The absence of inner sheath has the advantage of lower cable diameter and reduced bending radius.

Construction		Technical Data	
Conductor	: Plain copper bunched as per class 5 of VDE-0295.	Specification	: Generally based on VDE-0250.
Insulation	: PVC type YI-2 as per VDE 0207. Black cores with white numbers and one green / yellow core. The number of cores indicated in the tables includes the green / yellow core.	Temperature range	
		Stationary	: - 30°C to + 80°C.
		Flexing	: - 5°C to + 80°C.
Assembly	: Cores twisted in layers, wrapped with polyester binder and braided with plain copper wires with 85% coverage.	Working voltage	: 300/500 Volts.
Outer sheath	: Black * coloured Oil resistant PVC type YM-2 as per VDE 0207. Flame retardant to IEC-332-1.	Minimum bending radius	: 15 X cable diameter for fixed installation.
		Conductor resistance	: as per class-5 of VDE-0295.
		Insulation resistance	: 20 MΩm - Km.
		Mutual Capacitance	: core/core 150 nF/Km. : core/screen 280 nF/Km.
		Inductance	: 0.7 mH/Km.
		Test voltage	: 2000 V.for 5 Minutes.

* Grey coloured sheath can be supplied on request.

CY DATA TRANSMISSION CABLE

Size sq. mm	Order No.	MESC Code	No. of cores	Strands X diameter no.x mm	Insulation thickness mm	Sheath thickness mm	Approx. O.D. mm	Approx. Weight Kg/Km
0.5	15012	0581-03C00050-U1BK8-05	3	16 X 0.2	0.6	0.8	7.3	75
	15013	0581-04C00050-U1BK8-05	4	16 X 0.2	0.6	0.8	7.8	90
	15014	0581-05C00050-U1BK8-05	5	16 X 0.2	0.6	1.0	8.9	115
	15015	0581-06C00050-U1BK8-05	6	16 X 0.2	0.6	1.0	9.5	135
	15016	0581-07C00050-U1BK8-05	7	16 X 0.2	0.6	1.0	9.5	135
	15017	0581-08C00050-U1BK8-05	8	16 X 0.2	0.6	1.2	10.9	165
	15018	0581-10C00050-U1BK8-05	10	16 X 0.2	0.6	1.2	12.1	195
	15019	0581-12C00050-U1BK8-05	12	16 X 0.2	0.6	1.2	12.7	230
	15020	0581-14C00050-U1BK8-05	14	16 X 0.2	0.6	1.2	13.2	255
	15021	0581-16C00050-U1BK8-05	16	16 X 0.2	0.6	1.2	13.8	280
	15022	0581-19C00050-U1BK8-05	19	16 X 0.2	0.6	1.2	14.5	315
	15023	0581-24C00050-U1BK8-05	24	16 X 0.2	0.6	1.5	17.3	405
	15024	0581-27C00050-U1BK8-05	27	16 X 0.2	0.6	1.5	17.6	440
	15025	0581-30C00050-U1BK8-05	30	16 X 0.2	0.6	1.5	18.2	470
	15026	0581-37C00050-U1BK8-05	37	16 X 0.2	0.6	1.8	20.0	580
	15027	0581-48C00050-U1BK8-05	48	16 X 0.2	0.6	1.8	22.8	740
15028	0581-61C00050-U1BK8-05	61	16 X 0.2	0.6	2.1	25.2	920	

Size sq. mm	Order No.	MESC Code	No. of cores	Strands X diameter no.x mm	Insulation thickness mm	Sheath thickness mm	Approx. O.D. mm	Approx. Weight Kg/Km
0.75	15029	0581-03C00075-U1BK8-05	3	24 X 0.2	0.6	0.8	7.8	90
	15030	0581-04C00075-U1BK8-05	4	24 X 0.2	0.6	1.0	8.8	115
	15031	0581-05C00075-U1BK8-05	5	24 X 0.2	0.6	1.0	9.4	135
	15032	0581-06C00075-U1BK8-05	6	24 X 0.2	0.6	1.0	10.2	155
	15033	0581-07C00075-U1BK8-05	7	24 X 0.2	0.6	1.0	10.2	160
	15034	0581-08C00075-U1BK8-05	8	24 X 0.2	0.6	1.2	11.6	195
	15035	0581-10C00075-U1BK8-05	10	24 X 0.2	0.6	1.2	12.9	230
	15036	0581-12C00075-U1BK8-05	12	24 X 0.2	0.6	1.2	13.5	275
	15037	0581-14C00075-U1BK8-05	14	24 X 0.2	0.6	1.2	14.1	305
	15038	0581-16C00075-U1BK8-05	16	24 X 0.2	0.6	1.2	14.8	335
	15039	0581-19C00075-U1BK8-05	19	24 X 0.2	0.6	1.2	15.5	380
	15040	0581-24C00075-U1BK8-05	24	24 X 0.2	0.6	1.8	19.1	520
	15041	0581-27C00075-U1BK8-05	27	24 X 0.2	0.6	1.8	19.5	560
	15042	0581-30C00075-U1BK8-05	30	24 X 0.2	0.6	1.8	20.1	605
	15043	0581-37C00075-U1BK8-05	37	24 X 0.2	0.6	1.8	21.5	705
	15044	0581-48C00075-U1BK8-05	48	24 X 0.2	0.6	2.1	24.9	910
15045	0581-61C00075-U1BK8-05	61	24 X 0.2	0.6	2.1	27.1	1130	

Size sq. mm	Order No.	MESC Code	No. of cores	Strands X diameter no.x mm	Insulation thickness mm	Sheath thickness mm	Approx. O.D. mm	Approx. Weight Kg/Km
1.0	15046	0581-03C00100-U1BK8-05	3	32 X 0.2	0.6	1.0	8.5	110
	15047	0581-04C00100-U1BK8-05	4	32 X 0.2	0.6	1.0	9.2	130
	15048	0581-05C00100-U1BK8-05	5	32 X 0.2	0.6	1.0	9.9	155
	15049	0581-06C00100-U1BK8-05	6	32 X 0.2	0.6	1.2	11.1	190
	15050	0581-07C00100-U1BK8-05	7	32 X 0.2	0.6	1.2	11.1	195
	15051	0581-08C00100-U1BK8-05	8	32 X 0.2	0.6	1.2	12.2	225
	15052	0581-10C00100-U1BK8-05	10	32 X 0.2	0.6	1.2	13.6	265
	15053	0581-12C00100-U1BK8-05	12	32 X 0.2	0.6	1.2	14.3	315
	15054	0581-14C00100-U1BK8-05	14	32 X 0.2	0.6	1.2	14.9	355
	15055	0581-16C00100-U1BK8-05	16	32 X 0.2	0.6	1.5	16.2	415
	15056	0581-19C00100-U1BK8-05	19	32 X 0.2	0.6	1.5	17.0	465
	15057	0581-24C00100-U1BK8-05	24	32 X 0.2	0.6	1.8	20.2	600
	15058	0581-27C00100-U1BK8-05	27	32 X 0.2	0.6	1.8	20.6	650
	15059	0581-30C00100-U1BK8-05	30	32 X 0.2	0.6	1.8	21.2	705
	15060	0581-37C00100-U1BK8-05	37	32 X 0.2	0.6	1.8	22.7	830
	15061	0581-48C00100-U1BK8-05	48	32 X 0.2	0.6	2.1	26.3	1070
15062	0581-61C00100-U1BK8-05	61	32 X 0.2	0.6	2.1	28.7	1325	

CY DATA TRANSMISSION CABLE

Size sq. mm	Order No.	MESC Code	No. of cores	Strands X diameter no.x mm	Insulation thickness mm	Sheath thickness mm	Approx. O.D. mm	Approx. Weight Kg/Km
1.5	15063	0581-03C 00150-U1BK8-05	3	30 X 0.25	0.6	1.0	9.1	130
	15064	0581-04C 00150-U1BK8-05	4	30 X 0.25	0.6	1.0	9.8	155
	15065	0581-05C 00150-U1BK8-05	5	30 X 0.25	0.6	1.2	11.1	195
	15066	0581-06C 00150-U1BK8-05	6	30 X 0.25	0.6	1.2	11.9	230
	15067	0581-07C 00150-U1BK8-05	7	30 X 0.25	0.6	1.2	11.9	240
	15068	0581-08C 00150-U1BK8-05	8	30 X 0.25	0.6	1.2	13.2	275
	15069	0581-10C 00150-U1BK8-05	10	30 X 0.25	0.6	1.2	14.8	330
	15070	0581-12C 00150-U1BK8-05	12	30 X 0.25	0.6	1.2	15.4	390
	15071	0581-14C 00150-U1BK8-05	14	30 X 0.25	0.6	1.5	16.7	460
	15072	0581-16C 00150-U1BK8-05	16	30 X 0.25	0.6	1.5	17.5	510
	15073	0581-19C 00150-U1BK8-05	19	30 X 0.25	0.6	1.8	19.0	605
	15074	0581-24C 00150-U1BK8-05	24	30 X 0.25	0.6	1.8	21.8	745
	15075	0581-27C 00150-U1BK8-05	27	30 X 0.25	0.6	1.8	22.3	810
	15076	0581-30C 00150-U1BK8-05	30	30 X 0.25	0.6	1.8	23.0	880
	15077	0581-37C 00150-U1BK8-05	37	30 X 0.25	0.6	2.1	25.3	1080
	15078	0581-48C 00150-U1BK8-05	48	30 X 0.25	0.6	2.1	28.8	1380
	15079	0581-61C 00150-U1BK8-05	61	30 X 0.25	0.6	2.4	31.7	1720

Size sq. mm	Order No.	MESC Code	No. of cores	Strands X diameter no.x mm	Insulation thickness mm	Sheath thickness mm	Approx. O.D. mm	Approx. Weight Kg/Km
2.5	15080	0581-03C 00250-U1BK8-05	3	50 X 0.25	0.7	1.2	11.0	185
	15081	0581-04C 00250-U1BK8-05	4	50 X 0.25	0.7	1.2	11.8	230
	15082	0581-05C 00250-U1BK8-05	5	50 X 0.25	0.7	1.2	12.9	275
	15083	0581-06C 00250-U1BK8-05	6	50 X 0.25	0.7	1.2	13.9	325
	15084	0581-07C 00250-U1BK8-05	7	50 X 0.25	0.7	1.2	13.9	345
	15085	0581-08C 00250-U1BK8-05	8	50 X 0.25	0.7	1.2	15.5	390
	15086	0581-10C 00250-U1BK8-05	10	50 X 0.25	0.7	1.5	18.0	500
	15087	0581-12C 00250-U1BK8-05	12	50 X 0.25	0.7	1.8	19.4	615
	15088	0581-14C 00250-U1BK8-05	14	50 X 0.25	0.7	1.8	20.2	690
	15089	0581-16C 00250-U1BK8-05	16	50 X 0.25	0.7	1.8	21.3	770
	15090	0581-19C 00250-U1BK8-05	19	50 X 0.25	0.7	1.8	22.3	880
	15091	0581-24C 00250-U1BK8-05	24	50 X 0.25	0.7	2.1	26.4	1125
	15092	0581-27C 00250-U1BK8-05	27	50 X 0.25	0.7	2.1	27.0	1225
	15093	0581-30C 00250-U1BK8-05	30	50 X 0.25	0.7	2.1	27.8	1335
	15094	0581-37C 00250-U1BK8-05	37	50 X 0.25	0.7	2.4	30.7	1665
	15095	0581-48C 00250-U1BK8-05	48	50 X 0.25	0.7	2.4	34.8	2090
	15096	0581-61C 00250-U1BK8-05	61	50 X 0.25	0.7	2.7	38.3	2610

Packing: Wooden Drums of 500/1000 Metres.